

CORSELETTE DE'LUXE

*Shape Your Core and Improve
Back Support Effortlessly!*

Our Corselette De'Luxe is designed with a cross-cut reinforcement on the back to provide superior posture support, making it ideal for women who spend long hours standing or sitting. Its abdominal compression strengthens the entire torso, helping reshape the mid-section while maintaining daily comfort. Perfect for young individuals in developmental stages who tend to slouch, this shaper promotes proper alignment and a more defined silhouette throughout the day.

BENEFITS OF USING CORSELETTE DE'LUXE:



ADJUSTABLE FIT

Front straps with 3 levels of adjustment for added comfort



POSTURE CORRECTION

Corrects posture and reduces lumbar pressure



WAIST REDUCTION

Helps reduce up to 2 sizes



— KNOW YOUR —
RIGHT SIZE
measurement chart for:

Corselette **D'Luxe**

- Slide a tape measure around your thorax
- Tighten it and place it in the center of your thorax

Please note, sizes may vary according to your measurement. This is just a guide

Sizes		Measure
28	28	28-29 in
30	30	30-31 in
32	34	32-33 in
34	36	34-35 in
36	38	36-37 in
38	40	38-39 in
40		40-41 in

*For hips and wide ribs select the size inside the black square.

AVAILABLE SIZES:

30 – 40

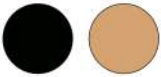
MATERIAL:

POWERNET (POLYAMIDE AND ELASTANE)

MEDICAL CODE:

E0732 OR L0627

COLORS:



CARE INSTRUCTIONS

- Hand wash in cold water
- Do not bleach
- Lay flat to dry in shade
- Do not wring
- Do not iron

BODY TYPE



Rectangle



Inverted Triangle



Pear