

# PANTY CONTROL

*Enhance Your Glutes  
and Define Your Shape!*

Our Panty Control is designed to enhance the entire lower silhouette by lifting the buttocks, controlling the abdomen, and trimming the hips for a smoother and more sculpted appearance. It features a special cutout that provides a natural butt-lifting effect, creating a rounder and more defined shape. The high-waisted design offers extra coverage, prevents rolling, and ensures a sleek, seamless look under clothing, making it ideal for daily wear.

## **BENEFITS OF USING PANTY CONTROL:**



### **ANTI-SLIP SUPPORT**

Anti-slip strips to prevent rolling



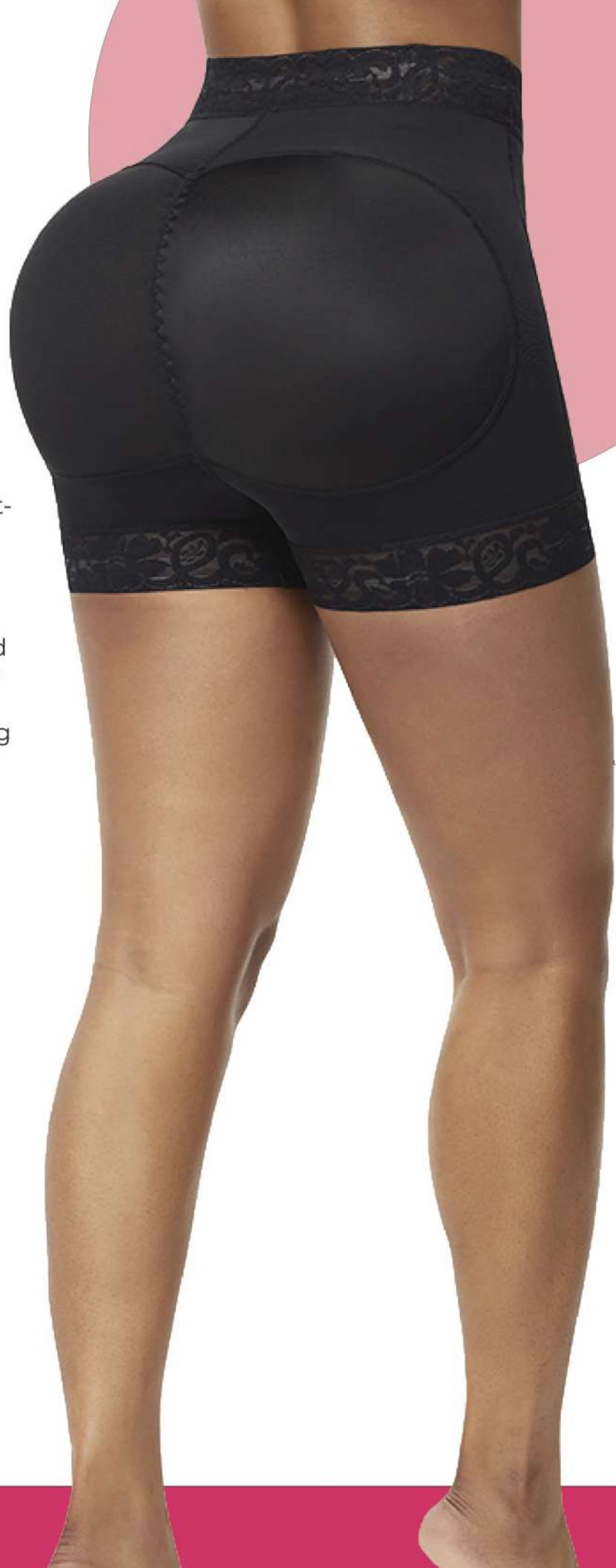
### **BACK RELIEF**

Reduces lumbar pressure



### **DISCREET COMFORT**

Discreet seams for total comfort



## FIND THE PERFECT SIZE FOR YOU!

Sizing chart for:

### Panty Control

- Slide a measuring tape around your hips.
- Adjust it and place it in the center of your hips.

Size	Waist	Hips
XS	24-26 in	33-35 in
S	26-28 in	35-38 in
M	28-31 in	38-40 in
L	31-33 in	40-42 in
XL	33-35 in	42-45 in
XXL	35-38 in	45-47 in

Please note, **sizes may vary according to your measurement.** This is just a guide!



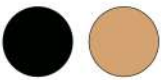
#### AVAILABLE SIZES:

XS – XXL

#### MATERIAL:

30% SPANDEX 70% NYLON

#### COLORS:



#### CARE INSTRUCTIONS

- Hand wash in cold water
- Do not bleach
- Lay flat to dry in shade
- Do not wring
- Do not iron

## BODY TYPE



Rectangle



Inverted Triangle



Pear

VISIT [ARDYSSLIFE.COM](https://www.ardyslife.com) TO LEARN MORE!